



idm
SÜDTIROL
ALTO ADIGE

efre·fesr
Südtirol · Alto Adige
Europäischer Fonds für regionale Entwicklung
Fondo europeo di sviluppo regionale



AUTONOME
PROVINZ
BOZEN
SÜDTIROL



PROVINCIA
AUTONOMA
DI BOLZANO
ALTO ADIGE



Beacon Südtirol - Alto Adige

Kick off meeting

08.06.2018

efre·fesr
Südtirol · Alto Adige
Europäischer Fonds für regionale Entwicklung
Fondo europeo di sviluppo regionale



AUTONOME
PROVINZ
BOZEN
SÜDTIROL



PROVINCIA
AUTONOMA
DI BOLZANO
ALTO ADIGE

AGENDA

- What is a Beacon?
- Where can I use the Beacon?
- Who could benefit?
- Who is already using the beacon?
- What is a LoRaWAN?
- Why is WSN interesting?
- Where can I use the WSN?
- We want you

What is a Beacon?



Is a small and low impact device which transmits over bluetooth on a regular interval a unique identifier.

Apps interested on beacon installed on the device seeing the beacon ID will some defined actions.

Where can I use the Beacon?



In location where there is low GPS signal in order to provide to the users helpful information about the location where they are located.



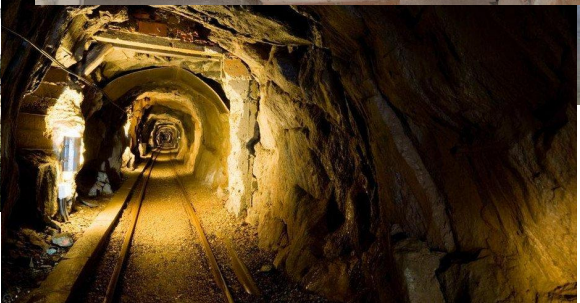
Where can I use the Beacon?

In natural parks to provide information about locations, plants or other points of interest even with low or in absence of GPS signal.



Where can I use the Beacon?

In museums or other places where a personalized guide could improve the experience of the visitors.

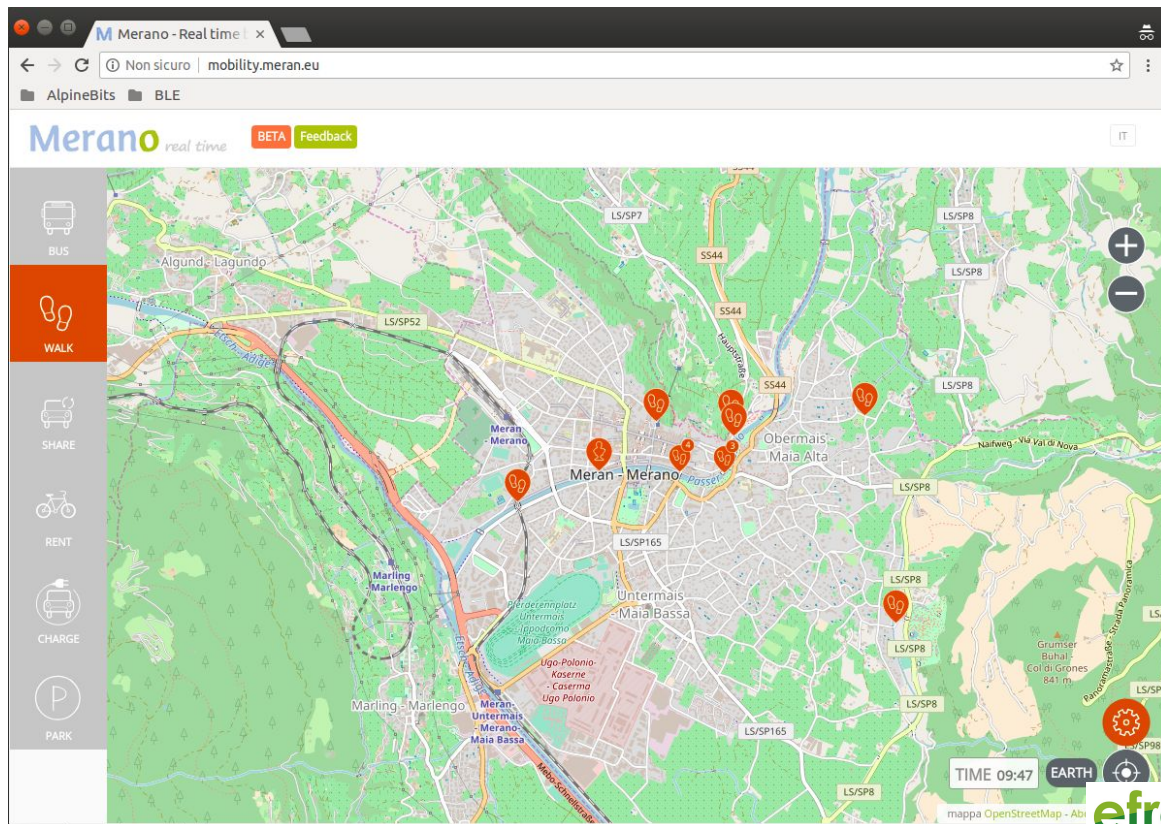


Where can I use the Beacon?

GPS for indoor navigation, what Google Maps does for the outdoors, beacons can do for the indoors. They can tell you where you are and where you're going in a museum, festival, train station or at NOI Techpark.



Who could benefit?



Merano
Kurverwaltung
Azienda di Cura, Soggiorno e Turismo

SASA
Società Merano Servizi Assest

STA
Südtiroler Transportstrukturen AG
Strutture Trasporto Alto Adige SpA



R3 GIS

AUTONOME
PROVINZ
BOZEN
SÜDTIROL

PROVINCIA
AUTONOMA
DI BOLZANO
ALTO ADIGE

alperia

STADTGEMEINSCHAFT MERAN
COMUNE DI MERANO

unibz

algorab

MADE IN CIMA
Stunning Websites. That Work.

car
SHARING
SÜDTIROL · ALTO ADIGE

ROUTE
220

SEV
DRIVE
hogast
Autism Care, Europe

hell
COMPANY
MARKETING & WERBUNG

nevicam

e-move
charging station

efre·fesr
Südtirol · Alto Adige
Europäischer Fonds für regionale Entwicklung



AUTONOME
PROVINZ
BOZEN
SÜDTIROL



PROVINCIA
AUTONOMA
DI BOLZANO
ALTO ADIGE

Who could benefit?



1006.org

dm **davide montesin**
innovative software

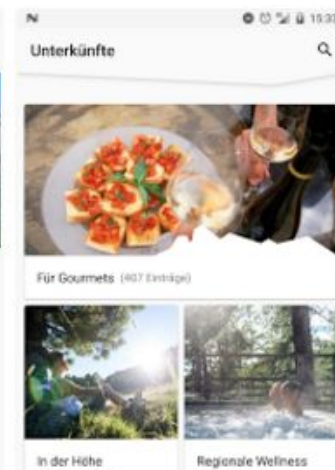
elements

MARKETING FACTORY



RaiifeisenOnline
Your Internet Partner

suedtirol.info
Suedtirol App



efre·fesr
Südtirol · Alto Adige
Europäischer Fonds für regionale Entwicklung



AUTONOME
PROVINZ
BOZEN
SÜDTIROL



PROVINCIA
AUTONOMA
DI BOLZANO
ALTO ADIGE

Who is already using the beacon?



1000 beacon devices produced by Onyx Beacon were placed on the buses, but also in the bus stops

The beacons detect App users who are within a bus stop or in a bus, and deliver useful contextual information.

This project is developed by Raiffeisen Online, a division of Raiffeisen Bank and regional partner of Onyx Beacon in Northern Italy and Austria.



SASA - Beacons
SASA - Open Data
SASA - Open Source App

What is a LoRaWAN?



LoRaWAN is a Low Energy and Low Impact wireless transmission protocol that can be used to transmit simple data.

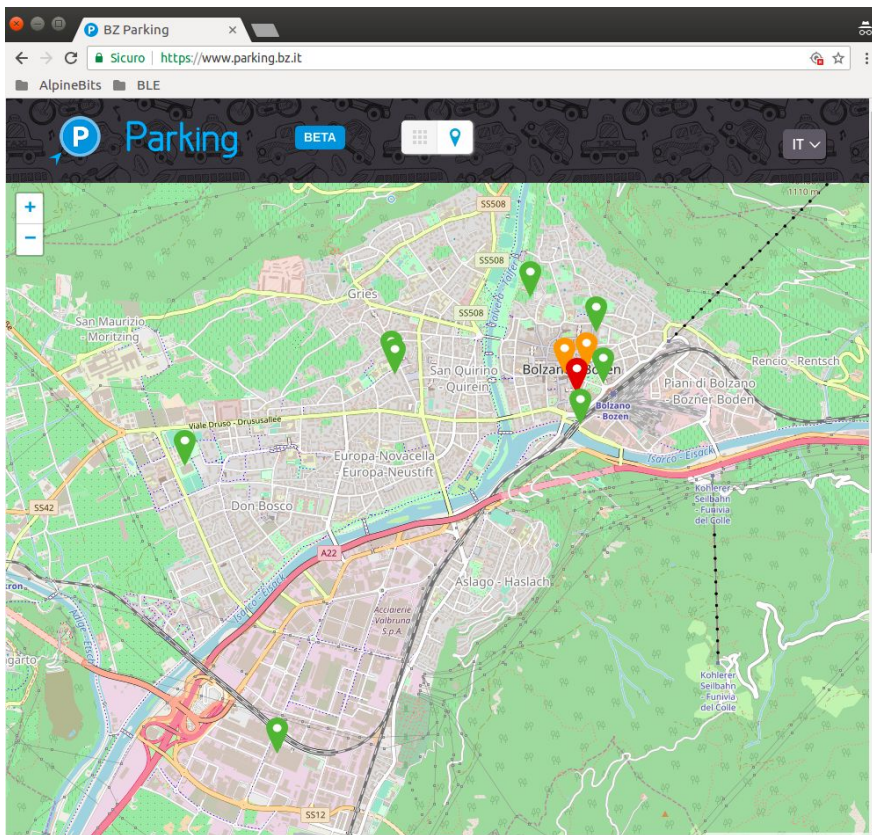
Why is WSN interesting?



The NOI Techpark will be a pilot area where the local companies are able to test innovative technologies.

There is a growing interest by local companies which are already developing and/or offering innovative services or products.

Where can I use the WSN?



To monitor and provide information in real time about free street parking lots.

Where can I use the WSN?



To monitor road condition, weather condition traffic condition, air pollution and travel time with low cost and impact sensors.



Where can I use the WSN?



In the agriculture sector to monitor the status of the fields, optimize the treatments, monitor the animals, etc.



Where can I use the WSN?



Improve the monitoring of the water and gas distribution network and the control of the consumption.



Reduce the waste and the risk of possible losses.

We want you



Provide us your **point of interest** for the **3.000 beacons** that will be installed over the **116 municipalities**.

Become part of the **IoT community** that we want create and provide us feedback about useful **pilots application**.



Danke für eure Aufmerksamkeit
Grazie per l'attenzione